

## **Sillabe per mano, parole corte o lunghe?**

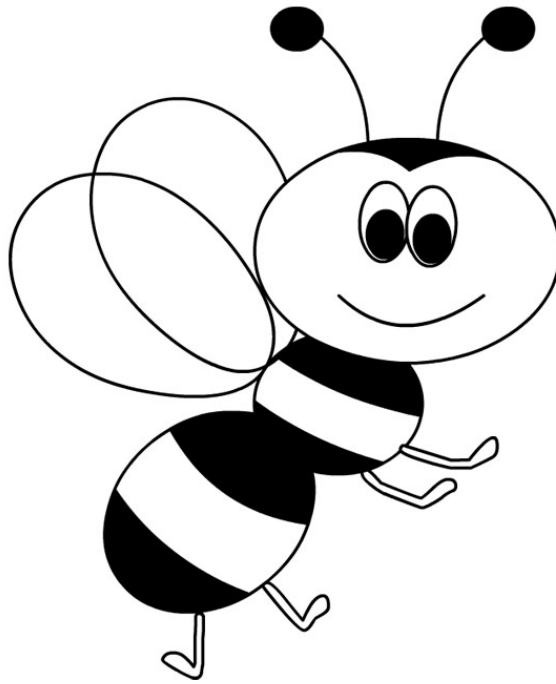
### Obiettivi:

- Dividere la parola in sillabe (analisi sillabica)
- Identificare la prima parte della parola
- Riflettere sulla lunghezza della parola
- Individuare parole lunghe o corte
- Quantificare la lunghezza delle parole (conteggio delle sillabe)

### Attività:

- Visione del video di spiegazione
- Schede alle pagine seguenti

APE



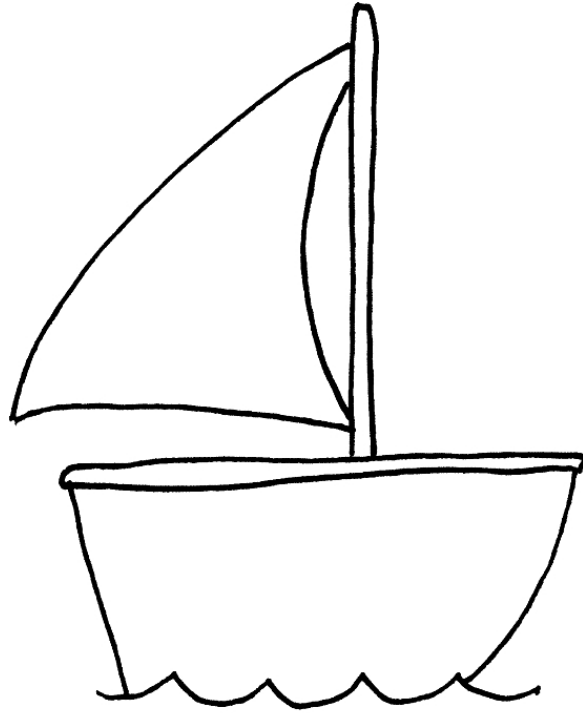
--	--	--

P

E

A

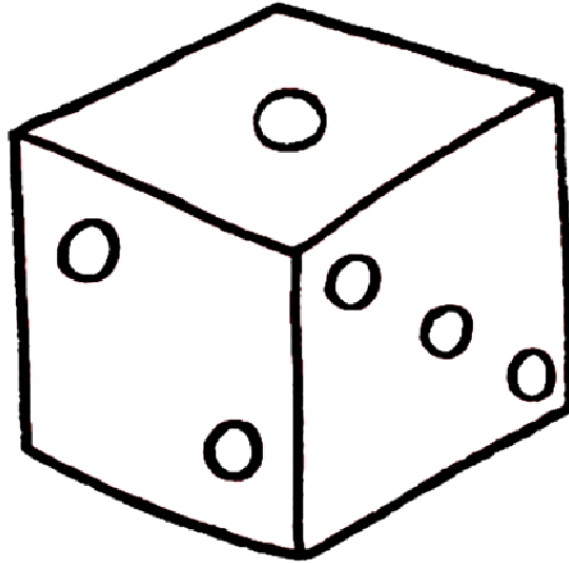
BARCA



--	--	--	--	--

A C B A R

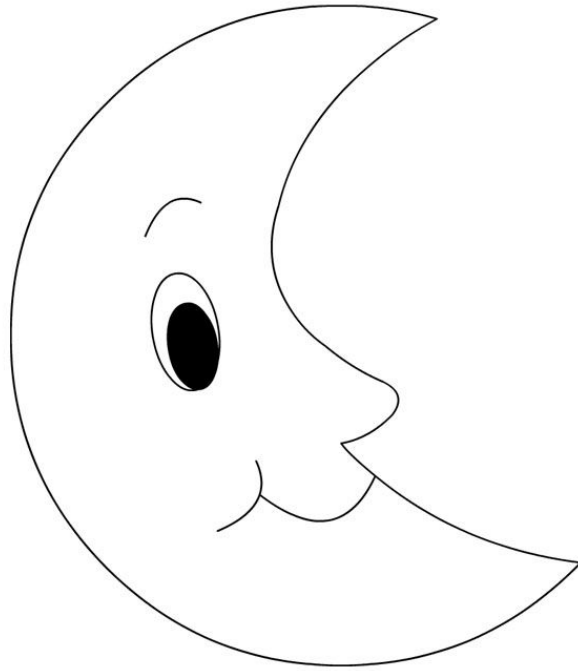
DADO



--	--	--	--

A D D O

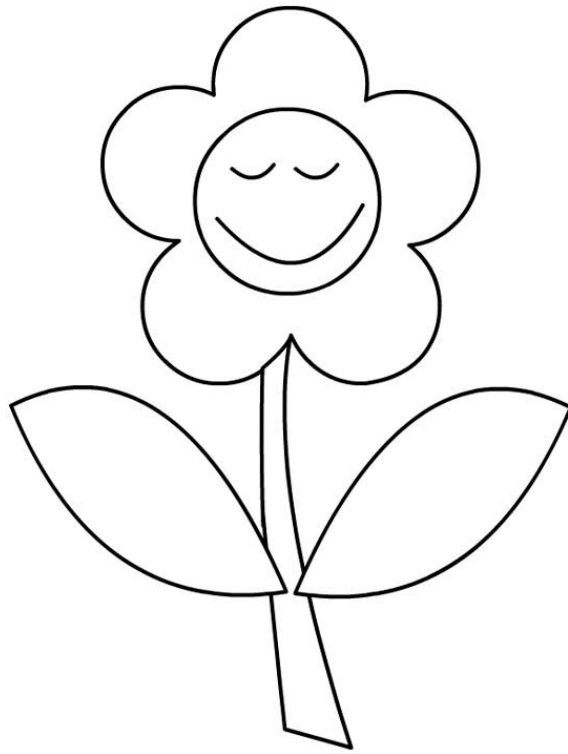
LUNA



--	--	--	--

N L A U

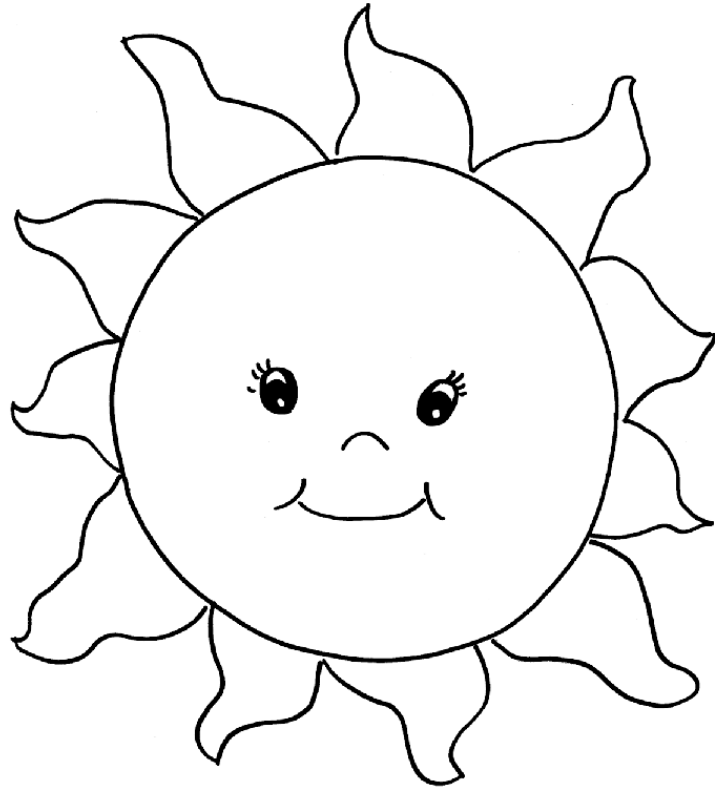
FIORE



--	--	--	--	--

R I E F O

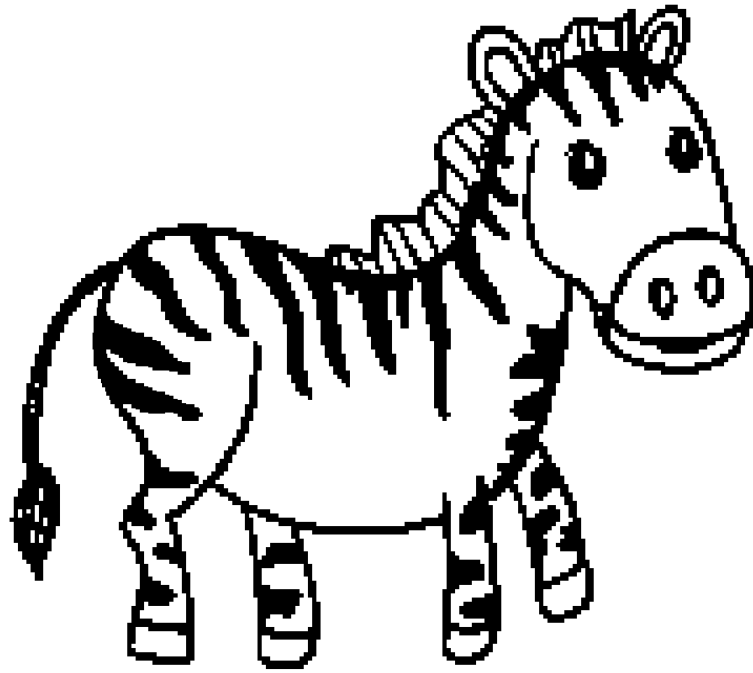
SOLE



--	--	--	--

O L E S

ZEBRA

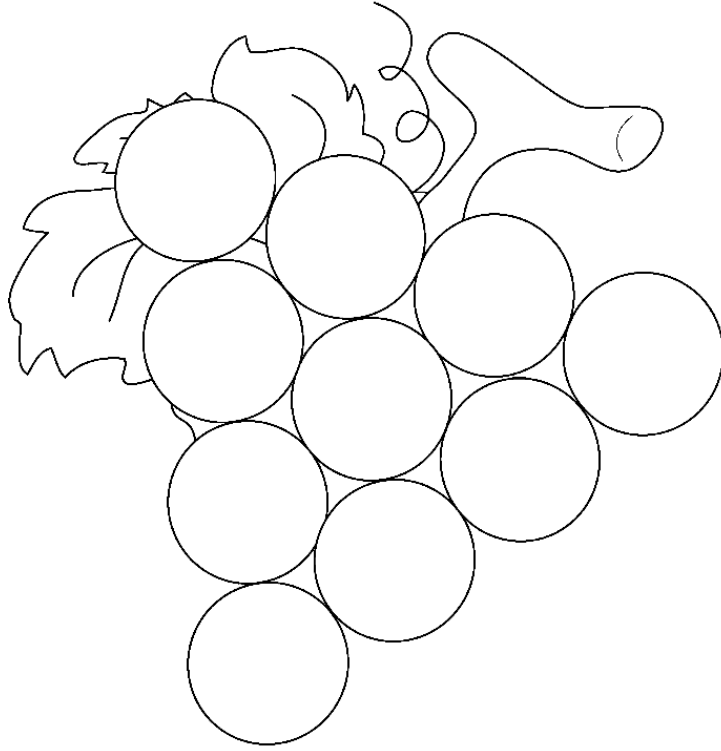


--	--	--	--	--

E R Z A B



UVA



--	--	--

V

A

U

NUVOLA



--	--	--	--	--	--

U L N V A O



GELATO



TO

GE

LA



Maestra Paula





LI

NE

MO



Maestra Paula





FOCA



CA

FO



CANE



NE

CA



Maestra Paola



Condividi



RANA



NA

RA





RE

--



TRE

--



SOLE

--	--



MELA

--	--



MELONE

--	--	--



SALAME

--	--	--



PEPERONE

--	--	--	--



TELEFONO

--	--	--	--

